



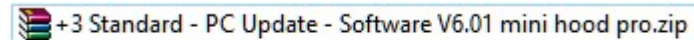
**CONVOTHERM<sup>®</sup>**  
*A Welbilt Brand*

# ConvoUpdate V6.0x & V5.19

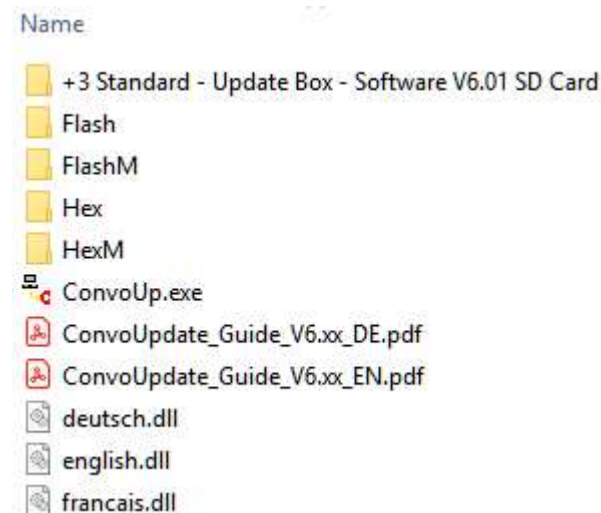
## User guide

# Installation of ConvoUpdate

1. - Download and Extract the Zip file in a new directory on your computers hard disc



2. - Start the program by execute the ConvoUp.exe



# Clues to ConvoUpdate

- Update has to execute for SM and BM software together
- texts, character sets and cookbooks will be uploaded for all available languages
- Update-process lasts 5 till 8 minutes depending on complexity
- old cookbooks will delete and are nonreversible
- Before update process:
  - shut off the Convotharm
  - remove the X12 connector at SM
  - and connect the RS232 cable between the PC/laptop and SM
- Please perform a C06/new init after the update process (gas values have to reconfigure)

*(do not forget to put in the X12-connector to SM)*

# Use of ConvoUpdate

The screenshot shows the 'ConvoUp +3 V5.3' software window. On the left, there are three red-bordered boxes with text and lines pointing to specific UI elements: 'Configure the COM port' points to the 'COM1' dropdown in the 'COM port' section; 'Option for +3 / mini up to 2018 or mini from 2018' points to the '+3/Mini <2018' radio button in the 'Unit type' section; and 'Update Process starts' points to the 'Update Start' button. The main area of the window contains the 'CONVOTHERM' logo, a list of three instructions, and a status bar at the bottom.

Configure the COM port

Option for +3 / mini up to 2018 or mini from 2018

Update Process starts

COM port  
COM1

Language  
English

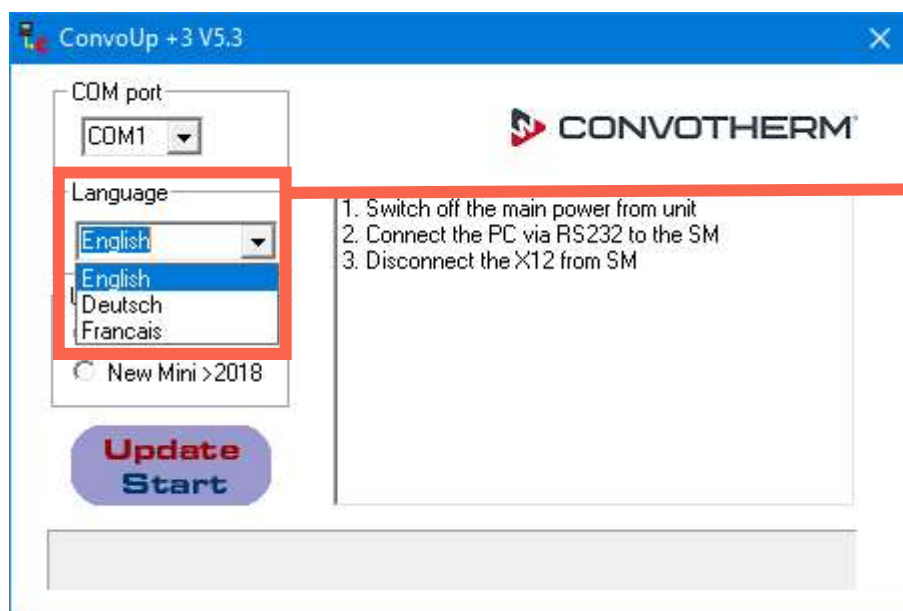
Unit type  
☒ +3/Mini <2018  
☐ New Mini >2018

Update Start

1. Switch off the main power from unit  
2. Connect the PC via RS232 to the SM  
3. Disconnect the X12 from SM

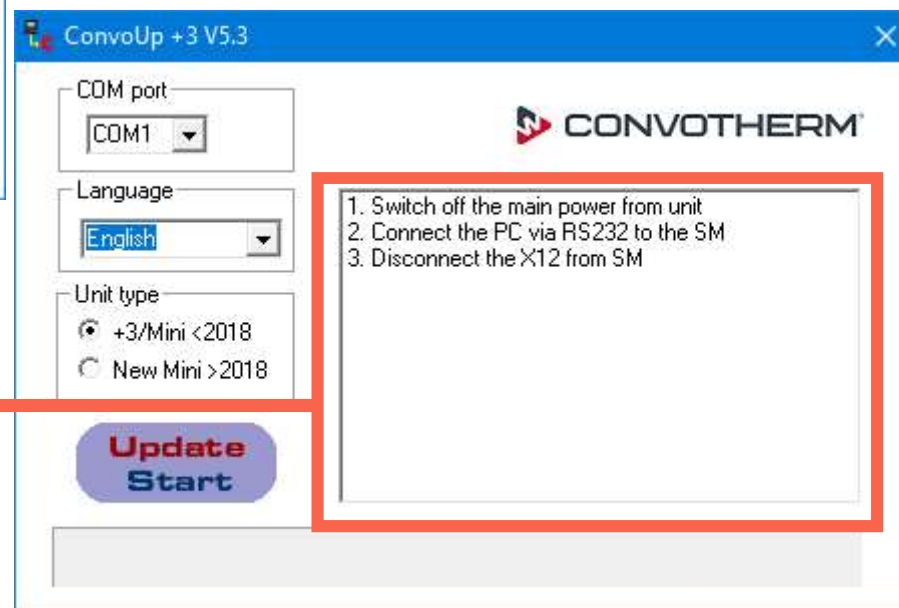
CONVOTHERM

# Change the language



Select the language

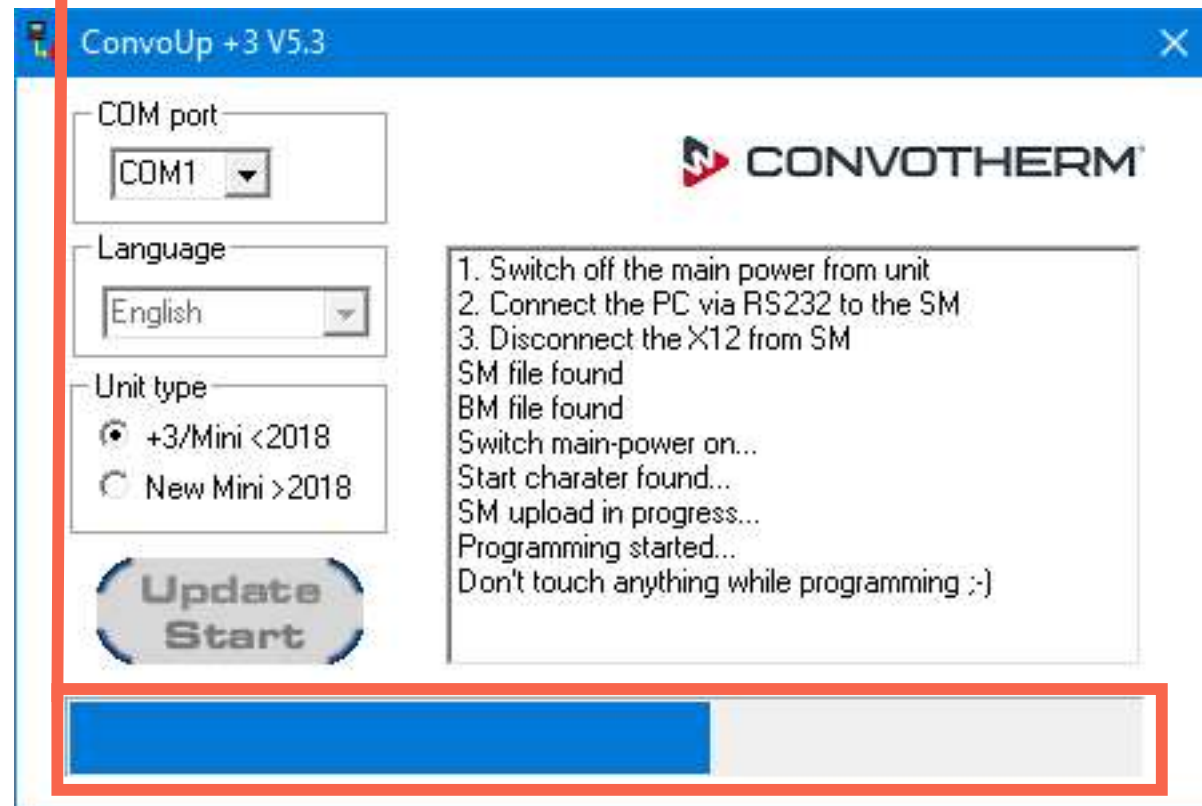
Language changed!



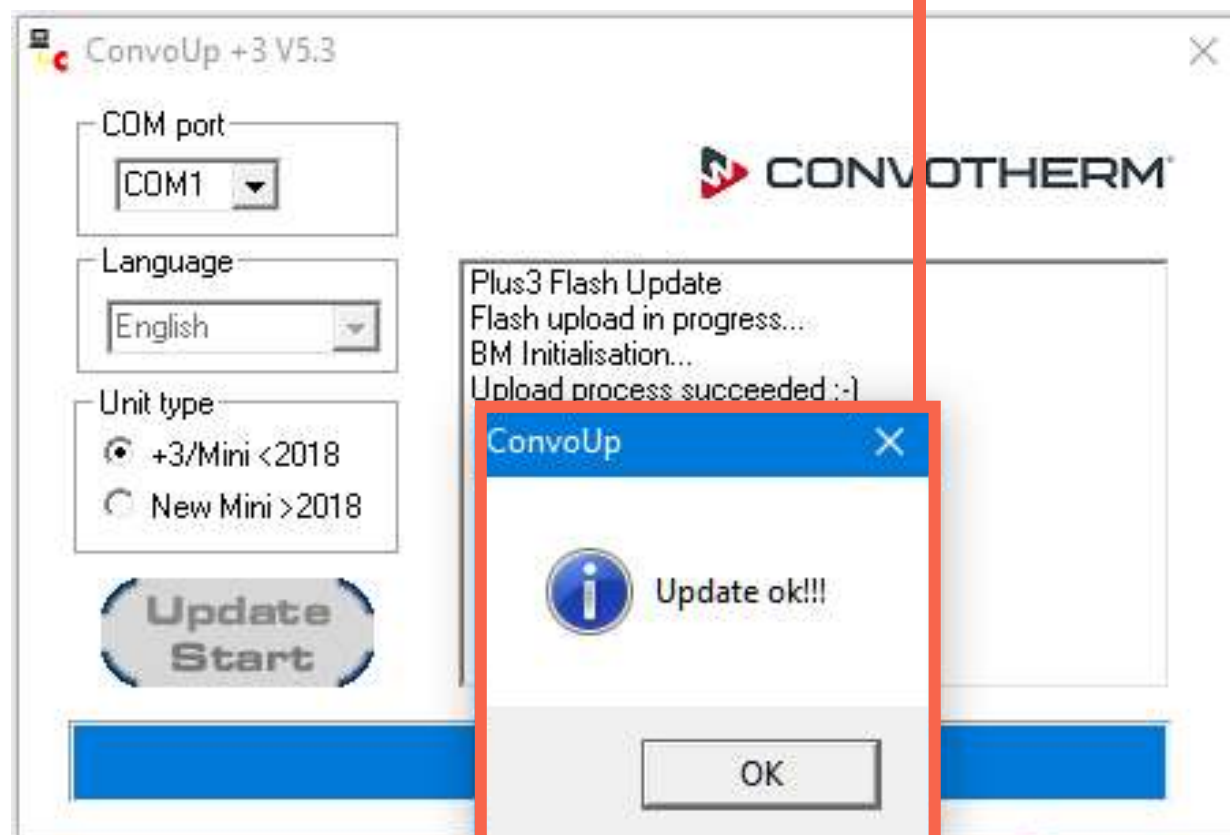
## ConvoUpdate in progress...

The progress bar  
should refresh  
all 10 till 15  
seconds

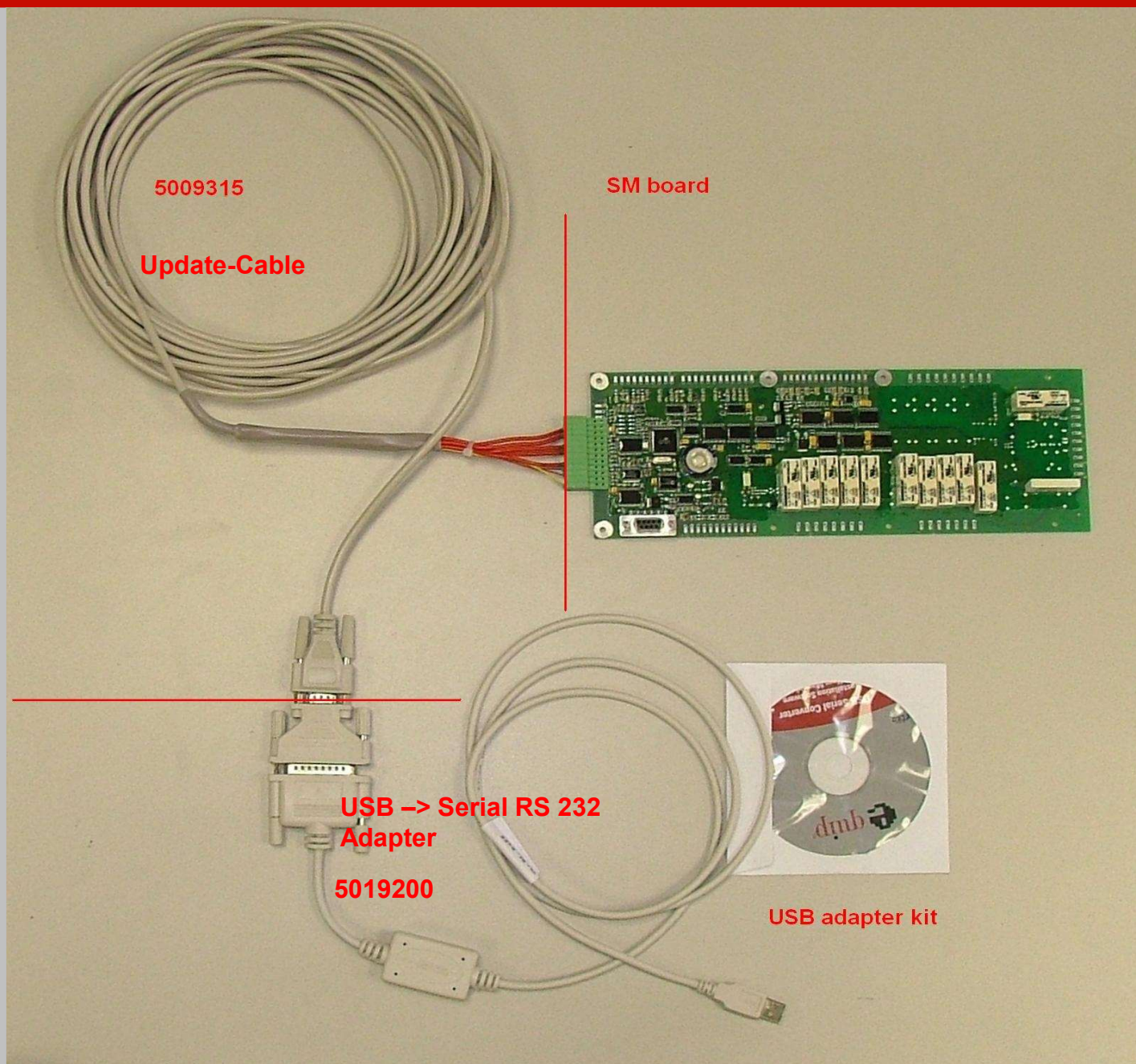
Then, all is OK!



## Update finished successful...









# Installation procedure

1. - Installation of the driver from CD-ROM
2. - Connection between the USBtoSer adapter and PC
3. - Configuration of the COM interface (Information next page)
4. >> Ready for action <<

